

Policies For :

Issue Requirements

The Lending Closet lends basic household items to those individuals transitioning to and from Fort Campbell. When departing Fort Campbell, individuals must return items signed out prior to clearing

ACS. Items cannot be issued to those individuals who have already cleared ACS.

**ID CARD & ORDERS
ARE REQUIRED**

Return

All items must be returned clean.
Items not clean will not be accepted for return!

Extension

Loans are for 30 days
Extensions given for up to 60 days

Late/Finance Claims

When items are not returned by the due date, a late notice will be sent out giving 7 working days to return items. If there is no contact by the borrower within that time frame, a finance claim will be submitted.

REMINDER.....

**ONCE THE FINANCE CLAIM IS
SUBMITTED THE ITEMS BELONG
TO THE BORROWER**

***ITEMS WILL NOT BE
ACCEPTED AFTER FINANCE
CLAIM IS SUBMITTED***

*Lee Soldier & Family
Support Center*

Army Community Service

5661 Screaming Eagle Blvd

Fort Campbell KY

42223-5407

.....

HOURS OF OPERATION

M-T-W&F 0730-1630

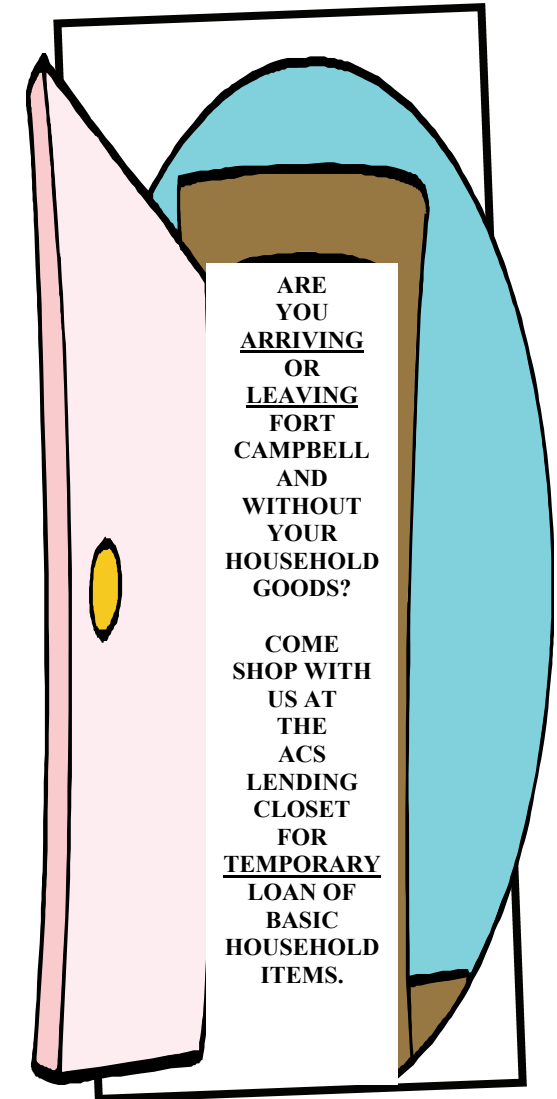
Thu 0930-1630

(270) 798-6313

(270) 798-0513



ARMY COMMUNITY SERVICE LENDING CLOSET



**ARE YOU
WITHOUT YOUR
HOUSEHOLD GOODS?**

WHAT DO WE
HAVE FOR YOU?

Basic Household/Kitchen Items

BABY ITEMS

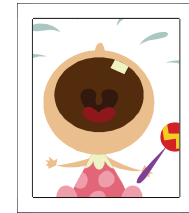


THE
LENDING CLOSET

HAS THE
HOUSEHOLD
ESSENTIALS,
YOU NEED
BEFORE YOUR
BELONGINGS
ARRIVE.

- **FOLDING TABLES**
- **ROUND**
- **RECTANGLE**
- **6ft SIZE (fold to 3ft)**
- **FOLDING CHAIRS**
- **SLEEPING MATS**
- **ADULT / CHILD IRONS**
- **IRONING BOARDS**
- **CROCKPOTS**
- **TOASTERS**
- **COFFEE POTS, DRIP, 4 Cup / 8 Cup**
- **TEA KETTLES**
- **CLOCKS**
- **TELEPHONES**
- **VACUUMS**
- **POTS / PANS**
- **DISHES**
- **PLASTIC GLASSES**
- **SILVERWARE**
- **SERVING PLATTERS**
- **MIXING BOWLS**
- **COLANDERS**
- **PITCHERS**
- **BAKING DISHES**
- **CUTTING BOARDS**
- **PIZZA PANS**
- **COOKIE SHEETS**

BABY GATES
PORT-A-CRIBS
HIGHCHAIRS-WOODEN



CHAIR / TABLE
BOOSTER SEATS



CARSEATS:

TODDLER-BOOSTER-INFANT

